

Clerk's Corner

First a word about planning applications – Agendas are published on the web-site before the meetings (2nd Thursday each month) and there is a data base for those residents who want to be notified about new planning applications in the area. If you want the Parish Council to take your views into account on an application please make them known either through me or the Tuesday Morning Surgeries before the Meeting. The Council cannot alter its decision (within six months) so comments made afterwards can have no effect.

Cllr Ballard and I attended a briefing on the new Core Strategy at IWC and with others attended a meeting with IWC about the Neighbourhood Plan

People you may need to contact on the Parish Council

Chris Reed **Chairman**
Responsibility **Newsletter/Wightlink**
Tel: 882514

E-mail: cn.reed@uwclub.net

Tony Cooper **Vice-Chairman**
Responsibility **Website/IWALC**
Tel: 884792

E-mail: ajciow@lineone.net

Tony Ballard
Responsibility **Traffic/Infrastructure**
Tel: 882854

E-mail:
anthonyballard@ukonline.co.uk

Rodney Warwick
Responsibility **Traffic/Infrastructure**
Tel 882849

E-mail: rwarwick@smidge.co.uk

Will Cowell
Responsibility **Police Liaison**
Tel: 884647

E-mail:
williamcowell261@btinternet.com

Lindsay Maggs
Responsibility **Social Services**
Tel: 880035

E-mail: lindz5750@msn.com

Sue Bulwer **Clerk to the Council**
Tel: 883907

E-mail:
fishbournepc@btinternet.com

Please note: the web address is www.fishbourneiow.org.uk
It may be accessed through the Isle of Wight website using the link www.iwight.com/parishcouncils/

options. Please do take the opportunity to acquaint yourself with the information the Parish Council is providing about the options before us and if possible come along to the AGM on 10th May. What we do now is vitally important to our Parish as it will set the course of development for the next 20 years. If we do and say nothing now we will have no voice if changes come along which we do not want.

In order to make time for the debate at the AGM the speakers who were to talk about Neighbourhood Watch have been postponed until later in the year. However, we are still looking for four volunteers for Fishbourne Lane and Kite Hill – it's not too onerous and is a way of serving our community. Again get in touch with me if you would like more information.

Those of you who have attended meetings over recent months will be aware that the dog waste bins have been re-sited to Quarr Lane and the R1 Footpath between Fishbourne Lane and Ashlake Copse Road. This was done to overcome the problems in both areas and it was hoped that dog-walkers on the beach would use the Quarr Lane bin when leaving.



Neighbourhood Watch another plea . . .

Two volunteers are required to cover Kite Hill and two for Fishbourne Lane. It is not too demanding but is important. Please contact the Clerk if you would like to help.

Since the first days of Fishbourne Parish, back in 2006, Tony Hart, one of our Parishioners, has produced the Newsletter. He has done this in conjunction with the 3 previous Chairmen and now with me. We produce the words and some of the photos and Tony puts the Newsletter together, ready for the printer. The Newsletter appears four times a year and is generally regarded as an excellent production, well designed and professionally laid out. We are lucky to have Tony's expertise. One day, of course, Tony will wish to hang up his typesetting/page layout boots. If there is someone among our readership who has an interest in publishing and would like to be involved, would they please contact Chris Reed on 882514 or via email cn.reed@uwclub.net

Unfortunately this has proved not to be the case and the rubbish bin (which is already inadequate) on the beach has been used instead. Clearly this is unsatisfactory, especially with the Jubilee Party and the summer months ahead so I am pleased to confirm that arrangements are being made to reinstate the bin on the beach.

The arrangements for the Diamond Jubilee are well underway and several residents are working very hard to ensure that everyone will have a brilliant day. However there is still plenty to do, not least clearing up the day afterwards, so if you would like to get involved – all sorts of skills required – please let me know (883907) and I'll put you in touch with the right person. The more you put in – and all that!

The new 'round the oak tree' seat is underway and there is a very scary photo of yours truly handing over the deposit cheque to the constructors. It is a happy co-incidence that we have been able to use a firm from within the Parish.

God Bless Her Majesty and see you all at the Party! Sue.

Dates of Parish Council Meetings for 2012

Please note that ALL meetings will be held at the Royal Victoria Yacht Club .

Thurs 10 May AGM

Thurs 14 June

Thurs 12 July

No Meeting in August

Thurs 13 September

Thurs 11 October

All meetings will start at 7pm.

In addition, the Clerk and one or two Councillors attend a 'surgery' every Tuesday morning at 10am at the Royal Victoria Yacht Club when parishioners can discuss matters of concern.

Fishbourne Parish



ISSUE NO 19

MAY 2012

Newsletter

The Parish Council needs your views

As a consequence of recent Government policy and in particular The Localism Bill, communities are now encouraged to help shape their own local areas for the next generation. This means that we, in Fishbourne, can set out in a plan how we want the Parish of Fishbourne to develop over the next twenty or more years. What sort of services or amenities and what housing development would be appropriate for our community are all up for consideration.

When finished the plan would be our own policy document, recognised by the IOW Council and would be the main policy guide for future Parish Councillors. So it is a very important document.

Fishbourne parishioners have to choose one of the two significantly different options.

Choice 1. This would entail us preparing our own Neighbourhood Plan (NP) relevant to and limited to the area within the Parish boundary. This form of plan would be prepared and funded solely by the Parish. On completion it would have to be approved by the Isle of Wight Council as not being into contradiction with the Isle of Wight Core Strategy and also approved by a referendum of the Parish electorate. It will require a significant amount of work by volunteers within the Parish and a significant increase in precept to fund the employment of professional consultants to deal with such matters as a comprehensive habitat report, sustainability report and strategic environmental assessment. However it would be the Parish's own document on which future planning decisions would be based.

Choice 2. A major part of Fishbourne Parish is within the Area of the Ryde Area Action Plan (AAP). This plan is

being prepared by the Isle of Wight Council. The Parish Council has been offered a bespoke Fishbourne Section within the Area Action Plan over which we may have a significant influence. How much influence will depend on the effort we put into it and the extent to which the Isle of Wight Council exercises any control. The costs to the Parish would be minimal as most of the work and the employment of consultants would be carried out and funded by the Isle of Wight Council. Some of the Parish, that part south of

housing), traffic and infrastructure, Quarr Abbey and Wightlink. All can be dealt with under both choices, but how and in how much detail is the question.

It is a difficult choice and between us all, we must decide which course of action is better for Fishbourne. The Parish Council has asked Cllr Tony Ballard to form a Committee and he is in the process of doing so. There are already four or five people earmarked who have relevant skills – law, planning and infrastructure being three immediate examples. However these volunteers are all from the area in and around Fishbourne Lane and Cllr Ballard would welcome anyone from other parts of the Parish. A recent leaflet drop in Firestone Glade, Kite Hill and Barge Lane areas has not had the desired result of encouraging volunteers to come forward.



the A3054, is not within the Ryde AAP. We have been advised by the IWC that any "Fishbourne Section" within the AAP would apply to all the Parish, but some may have doubts that the "Fishbourne Section" would extend to those areas outside of the AAP boundary or that the plan would be in sufficient detail to suit our requirements.

The major issues to be dealt with are development (all types, including

The next Parish Council Meeting happens to be the AGM – Thursday 10 May. The Clerk has postponed the Neighbourhood Watch talk and the meeting will be devoted to a debate on the choice facing us – between the AAP or the NP. It will then form an Agenda Item for the Councillors to discuss and decide on which choice to make or what next step to take.

Please come along and tell us what you want. Before the meeting you will have received a leaflet setting out the pros and cons of the two choices – to help you and through you the Parish Council decide what is best for Fishbourne.

Meeting at The Royal Victoria Yacht Club at 7pm on Thursday 10 May



The Queen's Diamond Jubilee Party Monday 4 June 2012

Oak Tree Green (the first green below *The Fishbourne*)

Fishbourne Parish Council and the Royal Victoria Yacht Club are joining forces to organise a Party to celebrate The Queen's Diamond Jubilee year.

Following the success of last year's Royal Wedding party, a small Committee has been established and is busy planning the festivities. On the enclosed leaflet you will find the programme for the Day, starting with the option of a late breakfast at the Royal Victoria Yacht Club (from 10am), followed by the party with a hog roast on Oak Tree Green from 1 o'clock to 6pm and then more entertainment put on by The Fishbourne with music and a late BBQ.



The RVYC Cadets will be organising games on both the Oak Tree Green and the Lower Green which it is hoped will include a go-cart race. There will be live music and live on-stage performances throughout the Party.

ALL ARE WELCOME. If possible do not bring your car as parking will be limited to the disabled and the very elderly and the road round the green and to the lower green will be closed – as will the pub car park.

It promises to be a terrific day. There will not be an entry or ticket charge but it is hoped that people will feel they could make a donation. The cost of the hog roast is being met by a generous gift from Wightlink.

To commemorate the Diamond Jubilee, the Parish Council decided to raise funds and replace the seat which used to encircle the Oak Tree; the seat fell into disrepair and was removed a few years ago. The IW Council replaced it with the large metal bench-seat which is there today. This will be removed. The Jubilee Seat is being built by a local engineering company –

These photographs were taken at a similar event held on the green last year, celebrating the wedding of Prince William and Kate Middleton. (Photos by Kathy Hart)

F1 Precision of Cothey Butts. It is being carefully measured and fitted and will be guaranteed for at least 25 years. The style is based on the metal circular seat round the Umbrella tree close to East Cowes Town Hall. The Parish Council has consulted the IW Tree Officer who is happy for us to install the new seat – as long as it does not damage the oak tree.

The centrepiece of the party will be the unveiling of the Jubilee Seat by Fishbourne resident Adrian Medley, who is a Deputy Lieutenant of the Isle of Wight and is thus a representative of Her Majesty.

As you will appreciate, the cost of the seat is substantial. The Party Committee has already raised over half the anticipated cost of £6,000. The Daisie Rich Trust got us off to a flying start with a generous donation. Local businesses have also been very kind and sizeable donations have been received from them and others are promised. Alongside these, several significant individual donations have also been made. Should you wish to send us a cheque – however small – it will be welcome and much appreciated. Please make it out to Fishbourne Jubilee Fund and send it to Mrs Susan Bulwer, Clerk, Fishbourne Parish Council, Lytton House, 67 Fishbourne Lane, Ryde, PO33 4EX (or give it to the pub who will pass it on). We hope to raise funds on the day itself, so watch out for our volunteer 'bucket collectors'. Any surplus funds will be divided between the Parish Council's and Yacht Club's chosen charities.

If you would like to help, we need volunteers to put up bunting, make salads, help with tombola and raffle and general stewarding. We will also require a small team to clear up afterwards – Contact Chris Reed (882514) with your details and we thank you in advance.

More details can be found on the enclosed leaflet, including the lucky draw prize.

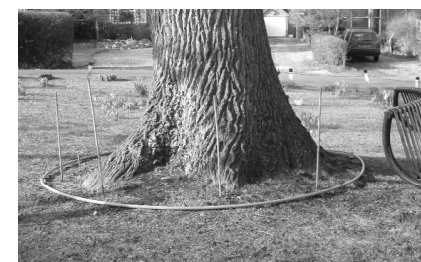


Teaching Apiary opened at Quarr Abbey

As part of a joint venture between the Isle of Wight Bee Keeping Association (IW BKA) and Quarr Abbey, a teaching apiary has been officially opened at Quarr. The apiary will help to meet the demand for beekeeping courses on the Island and the need to increase the number of locally bred bees.

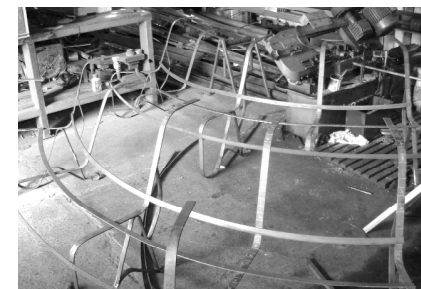
Situated in the Abbey grounds the apiary will be used for practical, hands-on training from April onwards to supplement the theoretical courses which started earlier in the year. The honey harvest will be sold in the new farmshop at Quarr.

The apiary was developed with support and grants from both the Awards For All scheme (National Lottery) and the IW AONB Sustainable Development Fund. The project will address the need for new beekeepers to be able to handle bees, and help to meet the demand for healthy, local bees.

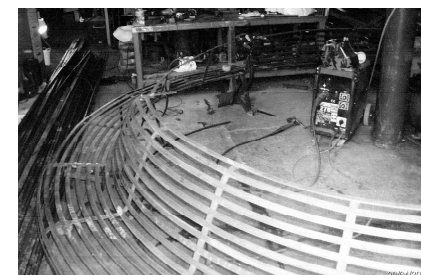


The plan

The Jubilee seat in production



The beginning



Late April

Dave Cassell, Teaching Apiary Chairman, commented "We'd like to thank the Religious Community of Quarr for sharing their domain with us. The Association can now offer both theoretical and practical training for new beekeepers and provide a much-needed facility for collecting swarms, which will make a huge contribution to the Rearing Island Bees programme".

There has been an upsurge of interest in beekeeping in recent years due to publicity about the bees' contribution to the environment and the threat to bee stocks caused by disease. The apiary will help to raise awareness of the role bees play in our everyday lives and the natural environment. A higher standard of beekeeping will also provide a benefit to farmers as well as honey producers.

Father Finbar, Prior Administrator at Quarr, said, "We are delighted that the



IWBKA's hard work has come to fruition in the completion of the Teaching Apiary. Our involvement with the Association has not only allowed us to maintain the long tradition of beekeeping at Quarr but also to share some of its facilities with the Island beekeeping community."

To report a swarm of bees that you'd like removed, please go to www.quarrabbey.co.uk for details of the Teaching Apiary free collection service.

A Guide and History

Quarr Abbey is launching Quarr Abbey: A Guide and History, published by Husdon's Heritage Group, at 3.30 pm at the Tearoom on Saturday 12th May.

All are welcome. If you buy the guidebook you get a free drink!

The new publication, which costs only £5, has four sections:

What You Can See

Life in the Monastery

The History of the Community

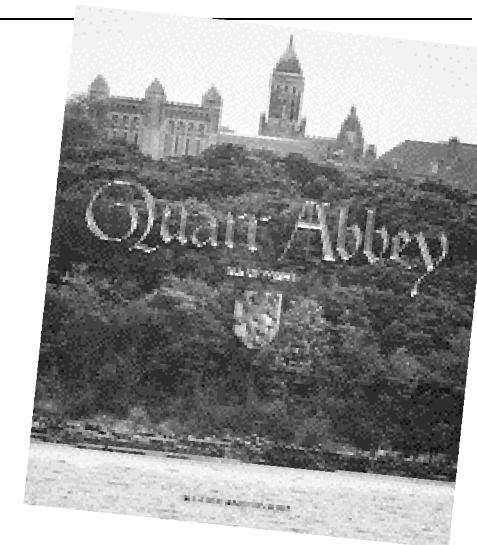
The Ancient Abbey

It is illustrated throughout with photographs.

Father Luke, who is responsible for the text of the new guide, commented:

"We have many visitors to the abbey now, and we wanted to produce something that will explain to them what they see as they look around, but also give them some insight into our way of life. Our new publication also offers a historical survey not only of our own abbey but also of the ancient abbey whose nearby ruins can be seen from the bridle path to Ryde.

"The photographer, Nigel Gibson, and the Art Director, Jamie Eley, have done a wonderful job of making this a really



beautiful book, a souvenir that people will want to keep and look through at their leisure. I also hope that it will help people who come here to understand why monks are here and what matters to them. I have shown many people around the abbey over the years, and I have tried to present the material so that it is easily accessible to such visitors."

Father Luke Bell is the author of several books, most recently *Baptising Harry Potter: A Christian Reading of J.K. Rowling and A Deep and Subtle Joy: Life at Quarr Abbey*. These and a wide range of other books, including especially children's books and books on Christian spirituality, are available from the Abbey Bookshop. (Tel: 01983 882420 ext 216).