

Fishbourne and Wootton Pathfinder



The Clean Rivers and Seas Task Force

- Reduce storm overflows
- 22 CSO's on the IOW/ 6 in Fishbourne & Wootton

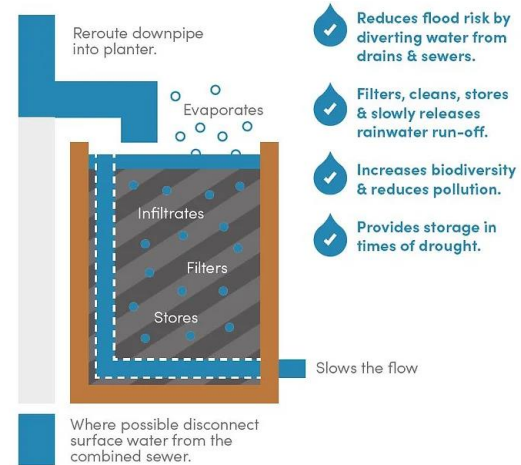
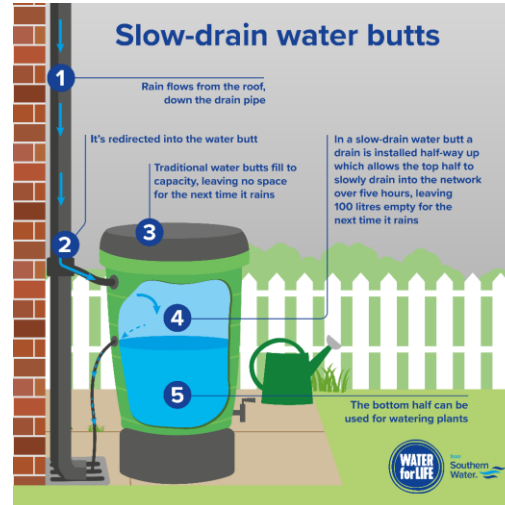
- **Fishbourne Lane**
- **Rosanna Sailing School**
- **Barge Lane**
- **Kite Hill**
- **Mill Square**
- **New Road**

- £10m funding



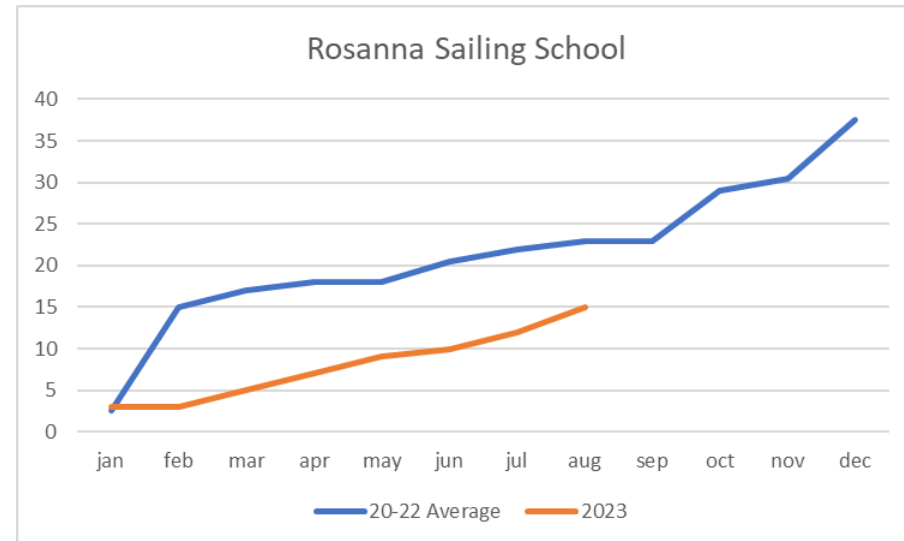
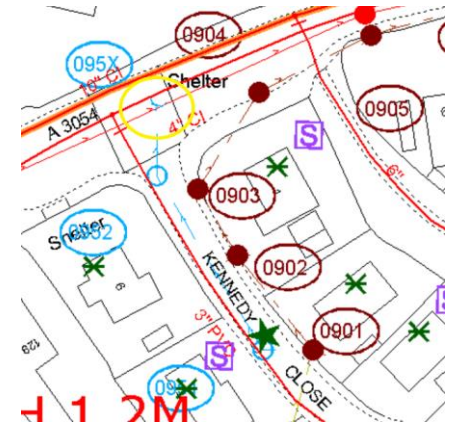
'Slow the flow'

- Water butts: complete!
- Planters: in progress
- Houses and large buildings which have a connection to the foul sewer
- Large roofs: 4 tonnes



Misconnections & Optimisation

- Kennedy Close (4 houses downpipes/2 gullies)
- Highway line in road (blocked)
- Foul line in road (blocked)
- Red Road: infiltration (pumped?!)
- Rosanna Sailing School (flap valve)
- Health checks!
- New Road: increase PFR – try again!



Sustainable drainage

- Highways schemes (Newport & Ryde Town Centre)
- Nature-based solutions
- N/A here